

# HORIZON ROPE ACCESS

## COMPANY PROFILE



*Limitless painting  
& maintenance*



# ABOUT US

*Horizon Rope Access is an Australian-owned and operated business managed by brothers Alex and Chris Fisher. With over 30 years' combined industry experience, we deliver high-quality rope access services in difficult-to-reach environments, without compromising on finish, safety or compliance.*

Horizon Rope Access provides highly skilled, IRATA-certified rope access technicians equipped to handle complex projects with precision. Our services include painting, window cleaning, façade pressure cleaning, building maintenance, anchor installation.

We service South East Queensland with a reputation for safety, quality workmanship and clear communication. We operate with full workers' compensation and insurance coverage and maintain strict compliance with Australian standards.

- ✓ Specialists in large commercial projects
- ✓ IRATA-certified, trade-qualified technicians
- ✓ Fully insured (public liability, professional indemnity & workers compensation)
- ✓ QBCC licensed painting and decorating
- ✓ Compliance with Australian standards
- ✓ High attention to detail





HORIZON ROPE ACCESS

# WHY ROPE ACCESS?

- ✓ Significant cost savings compared to scaffolding
- ✓ Minimal disruption to residents and common areas
- ✓ Faster Project completion
- ✓ Access to difficult to reach areas

## SERVICES



Window cleaning and pressure cleaning



Building rectification and façade repairs



Garden Maintenance



Full re-paint including facade repairs and texturing



Anchor installation, certification and tagging



# OUR TEAM

Our dedicated team of 15 highly-skilled and passionate staff continuously strives to deliver exceptional results and exceed our clients' expectations. The synergy among our team members, under the expert guidance of Alex and Chris, fosters an environment where safety and quality remain at the forefront of our company ethos. Despite their vast experience, both Alex and Chris are hands-on and actively involved on-site, personally overseeing defect inspections and final checks before project handover.



**Alex Fisher**

**Co-owner**

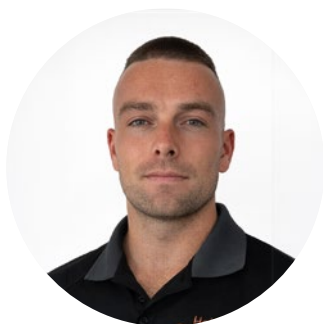
Alex started his working career in rope access as a window cleaner at 17 before learning about glazing and anchor installation. He quickly became a qualified painter and holds a QBCC for painting and decorating. Alex handles customer relations and builds lasting relationships with all our clients.



**Chris Fisher**

**Co-owner**

Chris started his rope access career at 18 after a couple years of carpentry. His vast range of skills picked up on different projects from GEO work on rocky cliffs to working on Brisbane's tallest buildings has been pivotal in completing all jobs to the high standard we expect at Horizon Rope Access.



**Ross Thompson**

**Site Foreman**



**Ryan Andrews**

**Site Foreman**



**Filisi Frost**

**Site Foreman**



# REFERENCES

## Business

### Mick Brown

Project manager, Higgins Coatings Gold Coast branch  
0400 010 433

### Richard Jackman

Project manager, Higgins Brisbane branch  
0427 539 060

### Jesse Murphy

Owner, Accessable services QLD  
0401 000 438 • jesse@accessableqld.com

### Bill Kitchiner

Project manager, Cosmopolitan  
0418 15 4528 • Twkbuild@bigpond.net.au

### Robert Evans

IRATA trainer, Graviteq  
045 057 8117 • REvans@graviteq.com.au

## Personal

### Colin Street

Director at SCN projects  
0413 737 644  
cs@scnptyltd.com.au

### Lindsay Sanderson

Finance consultant at Loan Market  
0417 639 368  
lindsay.sanderson@loanmarket.com.au

Selected Clients:



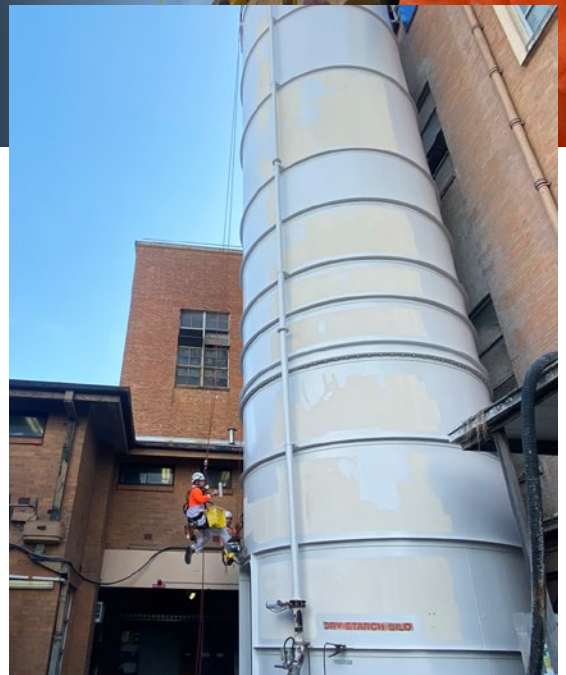


HORIZON ROPE ACCESS

# COMPLETED PROJECTS

"Horizon Rope Access have proven to be an important part of our network providing the highest quality workmanship, productivity and reliability. As a NACE CIP Level 2 Coatings Inspector and Project Manager, it is refreshing to find a company that I can rely upon whole heartedly."

- Michael Brown , Project Manager



## Visy Recycling Centre | Murarrie

- ✓ Industrial 2 pack paint finish
- ✓ Pressure clean
- ✓ Repaint of Visy signage
- ✓ Rust treatment



BEFORE

## The Admiralty | Surfers Paradise



AFTER

Complete remedial concrete repairs, sealing and repaint, anchor installation





## Riviera Apartments

Full repaint including render repairs, Structural Mastic Replacement and 3 coat Industrial Coating System on the handrails





HORIZON ROPE ACCESS

# COMPLETED PROJECTS

## **Waters Edge | Biggera Waters**

Comprehensive remedial works addressing water ingress, including full mastic replacement and waterproofing across the lower three levels. Completed 200m<sup>2</sup> of render repairs, a full repaint in a new colour scheme, and application of P6 and Xylene coatings to all balcony decks.







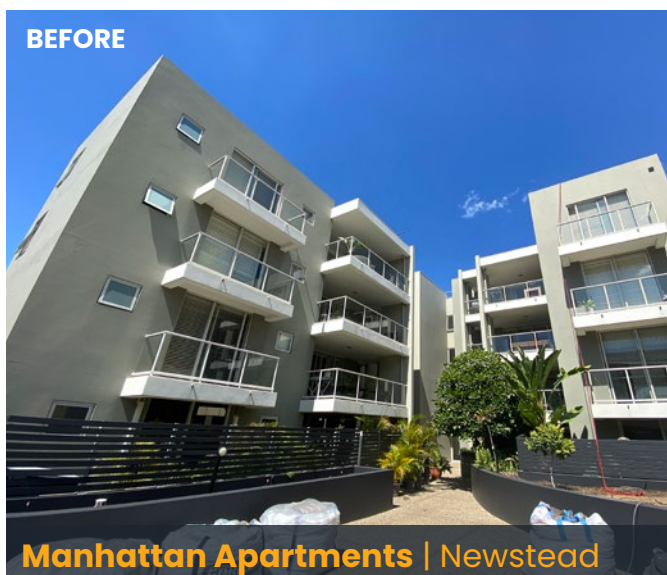


HORIZON ROPE ACCESS

# COMPLETED PROJECTS

"I have had the pleasure of working with Alex Fisher and the Horizon boys on multiple large scale projects with revenue values in excess of \$250,000. They are exceptionally professional, outstanding tradesmen and our clients love them – to the point where they are our subcontract abseilers of choice."

– Stephen White, Senior Business Development Manager,  
Programmed Property Services



Completion of Remedial Concrete Repairs and Full Re-Paint including new colour scheme



## Sofitel Pacific Resort | Noosa Heads

Remedial works including removal of water-damaged coatings, slab edge repairs and waterproofing, followed by a full pressure wash and repaint of the majority of the resort.





HORIZON ROPE ACCESS

# COMPLETED PROJECTS



## **Cbus Stadium | Robina**

Pressure cleaning of signage & structure



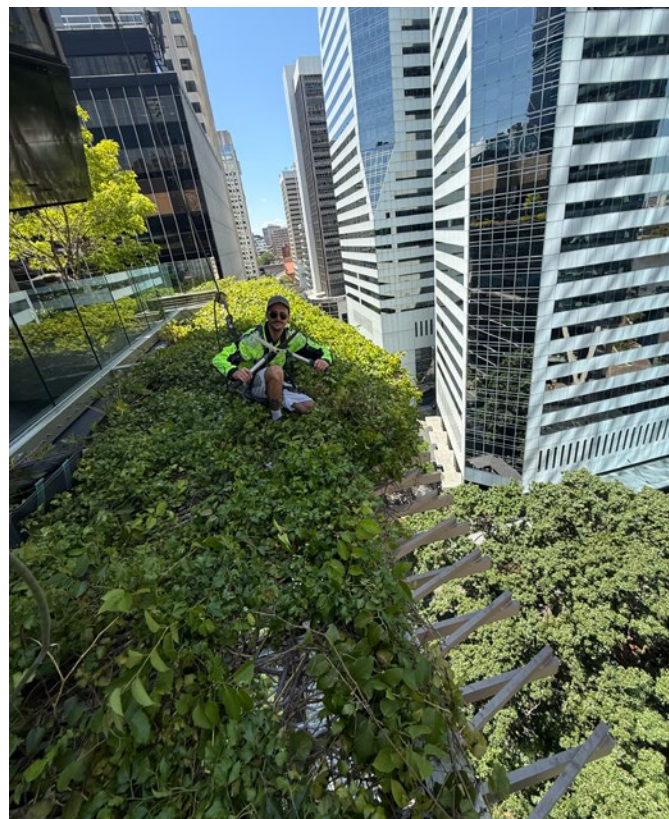
## **Liberty Panorama | Main Beach**

full repaint including steel structures and pressure cleaning maintenance program



## **The Green Apartments** Bowen Hills

Full repaint with a 7 colour scheme with  
render repairs and mastic  
replacement 5 buildings in total



## **Luminare Apartments**

Full Pressure clean, window clean and garden maintenance



An aerial photograph of the Hilton Surfers Paradise hotel. The building is a tall, modern structure with a glass facade and a blue sky sign. Several workers in orange safety gear are visible on the roof, performing maintenance or painting work. The surrounding area includes other buildings, a swimming pool, and some greenery.

HORIZON ROPE ACCESS

# COMPLETED PROJECTS

## **Hilton | Surfers Paradise**

We are proud to have completed the entire repaint of one of the most illustrious names and largest buildings the Gold Coast has to offer. Our team completed both the 'Orchid' and 'Boulevard' towers at the Hilton Surfers Paradise within the agreed timeframe and the highest quality.

**"There were 588 apartments in total, requiring cleaning, rectification works and repainting. We did not receive a single complaint during the project.**

**We had La Nina and IOD (Indian Ocean Dipole) weather influences with difficult weather days. Despite these challenges Horizon worked very efficiently to make up for lost time and the project was completed on schedule.**

**The hotel Chief Engineer and General Manager were both highly impressed with Alex and Chris and their team."**

*- Mike Ashton, Director, Performance Painting Co*





**Hilton** | Surfers Paradise  
Full repaint





We are *passionate*  
about our work and  
look forward to  
working with you!

*Limitless* painting  
& maintenance



**HORIZON ROPE ACCESS**

**1300 863 820**

[www.horizonropeaccess.com.au](http://www.horizonropeaccess.com.au)

